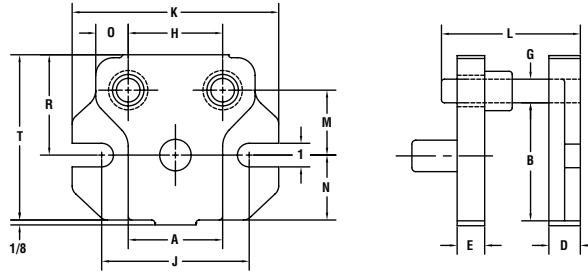


# Die Sets



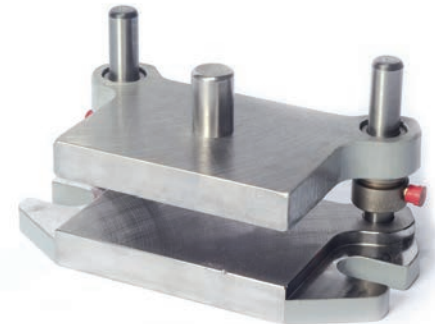
## Rear 2 Pin Die Sets

DIECO Part #	DIE SPACE		THICKNESS		Approx ship weight (lbs.)	GENERAL DIMENSIONS								
	LEFT TO RIGHT	FRONT TO BACK	DIE HOLDER	PUNCH HOLDER		G	H	J	K	M	N	O	R	T
	A	B	D	E										
33-C-11	3.00	3.00	1.12	1.00	23	0.75	3.00	5.50	7.25	1.75	1.62	0.87	2.75	4.37
43-C-11	4.00	3.00	1.25	1.00	27	1.00	3.00	6.25	8.75	1.75	1.75	1.31	3.19	4.94
44-C-11	4.00	4.00	1.37	1.25	33	1.00	3.00	6.25	8.75	2.25	2.25	1.37	3.75	6.00
45-C-11	4.00	5.00	1.37	1.25	35	1.00	4.00	6.25	8.75	2.75	2.25	1.37	4.25	7.00
46-C-11	4.50	6.00	1.50	1.25	47	1.00	5.50	6.25	9.25	3.25	3.25	1.37	4.75	8.00
54-C-11	5.00	4.00	1.37	1.25	35	1.00	4.00	7.25	9.75	2.25	2.25	1.37	3.75	6.00
55-C-11	5.00	5.00	1.50	1.25	43	1.00	4.00	7.25	8.75	2.75	2.75	1.37	4.25	7.00
64-C-11	6.50	4.50	1.50	1.25	47	1.00	5.50	8.75	11.25	2.37	2.62	1.37	3.87	6.50
65-C-11	6.50	5.00	1.50	1.25	38	1.00	5.50	8.75	11.25	2.75	2.75	1.37	4.25	7.00
66-C-11	6.50	6.00	1.50	1.25	59	1.00	5.50	8.75	11.25	3.25	3.25	1.50	4.87	8.12
75-C-11	7.50	5.00	1.50	1.25	65	1.00	6.50	9.87	12.37	2.75	2.75	1.37	4.25	7.00
77-C-11	7.50	7.00	1.50	1.25	67	1.00	6.50	9.75	12.25	3.62	3.87	1.37	5.12	9.00
84-C-11	8.50	4.00	1.50	1.25	58	1.00	7.62	10.75	13.25	2.25	2.25	1.37	3.75	6.00
88-C-11	8.50	8.00	1.50	1.25	85	1.00	7.62	10.75	13.25	4.25	4.25	1.37	5.75	10.00
95-C-11	9.50	5.00	1.50	1.25	67	1.00	7.62	11.75	14.25	2.75	2.75	1.37	4.25	7.00
105-C-11	10.00	5.50	1.50	1.25	75	1.25	8.75	12.25	14.75	3.12	3.00	1.50	4.75	7.75
1010-C-11	10.00	10.00	1.62	1.37	130	1.25	11.00	12.25	14.75	5.31	5.31	1.62	7.06	12.37

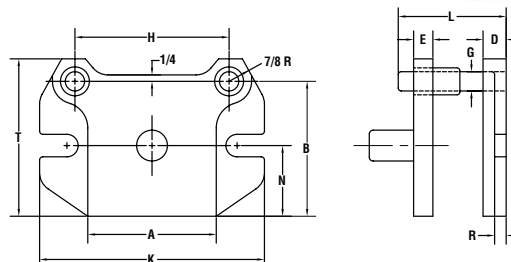
**ORDERING INFORMATION:**  
**To order specify:**  
 1) Catalog Number  
 2) Quantity  
 3) Type of bushings  
 4) Guide pin length  
 5) Shank size or no shank

## Foot Press Die Sets

DIECO Part #	DIE SPACE		THICKNESS		Approx ship weight (lbs.)	GENERAL DIMENSIONS								
	LEFT TO RIGHT	FRONT TO BACK	DIE HOLDER	PUNCH HOLDER		G	H	J	K	M	N	O	R	T
	A	B	D	E										
A-33	3.00	3.25	1.00	1.00	18	0.75	4.00		6.75		1.75		0.62	4.12
A-43	4.00	3.25	1.00	1.00	20	0.75	5.00		7.75		1.75		0.62	4.12
A-53	5.00	3.25	1.00	1.00	22	0.75	6.00		8.75		1.75		0.62	4.12
A-44	4.00	4.25	1.00	1.00	22	0.75	5.00		7.75		2.25		0.62	5.12
A-54	5.00	4.25	1.00	1.00	26	0.75	6.00		8.75		2.25		0.62	5.12
A-64	6.00	4.25	1.00	1.00	30	0.75	7.00		9.75		2.25		0.62	5.12
A-65	6.00	5.25	1.00	1.00	34	0.75	7.00		9.75		2.75		0.62	6.12



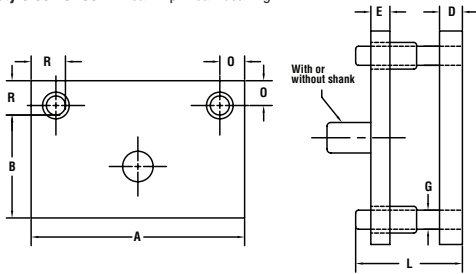
- Furnished complete with short straight bushings unless shoulder bushings are specified
- Designed for light stamping work on small power presses



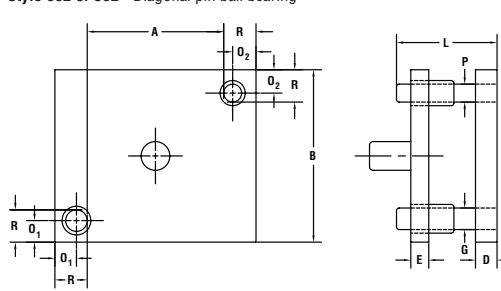
# Die Sets

- Many styles and sizes available to meet your die set needs
- Manufactured from A-36 hot rolled steel or aluminum plates
- All plates are stress relieved up to 23" with flame cut edges and ground to clean up unless otherwise specified
- Available with your choice of plain bearing or ball bearing components
- We have the capability to add bolt holes, milled pockets, torch cut burn outs and handling holes, or other machining your application requires (Prints are required for additional machining and must be specified when ordering.)

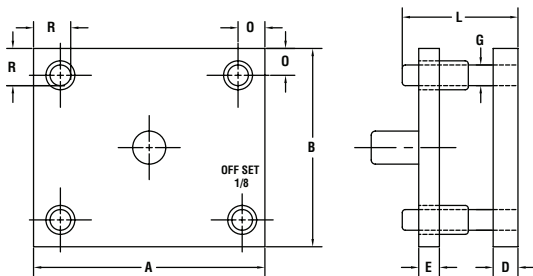
**Style 391** - Rear 2-pin plain bearing  
**Style 691 or 591** - Rear 2-pin ball bearing



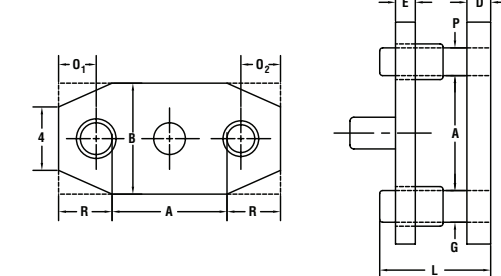
**Style 392** - Diagonal plain bearing  
**Style 692 or 592** - Diagonal pin ball bearing



**Style 396** - 4-pin plain bearing  
**Style 696 or 596** - 4-pin ball bearing



**Style 393/395** - Center pin plain bearing  
**Style 693/695 or 593/595** - Center pin plain bearing



**ORDERING INFORMATION:**  
**To order specify:**  
 1) Style of Die Set  
 2) Quantity  
 3) Dimensions for A, B, D & E  
 4) Guide pin diameter and length  
 5) Type of bushing  
 6) Shank size or no shank

*Custom Plates*  
 Available per your specifications in steel or aluminum



## Pin Locations

When G is:	1	1 1/4	1 1/2	1 3/4	2	2 1/2	3
R is:	2	2 1/4	2 1/2	2 3/4	3	3 3/4	4 1/4
O is:	1 1/2	1 5/8	1 3/4	1 7/8	2	2 1/2	2 3/4

**Style 391** - Rear 2-pin plain bearing  
**Style 396** - 4-pin plain bearing

## Pin Locations

When G is:	1 1/4	1 1/2	1 3/4	2	2 1/2	3
O1 is:	1 5/8	1 3/4	1 7/8	2	2 1/2	2 3/4
P is:	1	1 1/4	1 1/2	1 3/4	2	2 1/2
O2 is:	1 3/4	1 7/8	2	2 1/8	2 3/4	3
R is:	2 1/4	2 1/2	2 3/4	3	3 3/4	4 1/4

**Style 392** - Diagonal plain bearing  
**Style 393/395** - Center pin plain bearing

## Ball Bearing Pin Locations

**Style 696 or 596** - 4-pin ball bearing  
**Style 691 or 591** - Rear 2-pin ball bearing  
**Style 692 or 592** - Diagonal pin ball bearing  
**Style 693/695 or 593/595** - Center pin ball bearing

## Ball Bearing Series 500

When G is:	1	1 1/4	1 1/2	1 3/4	2	2 1/2
O is	1 11/16	1 13/16	2 1/6	2 3/16	2 9/16	2 15/16
R* is	2 5/8	2 7/8	3 3/8	3 5/8	4 1/8	4 13/16

## Ball Bearing Series 600

When G is:	1	1 1/4	1 1/2	1 3/4	2	2 1/2
O is	1 1/2	1 13/16	2	2 1/8	2 7/16	2 5/8
R* is	2 3/8	2 7/8	3 1/4	3 1/2	4	4 1/2



**PRODUCTO**

Producto Diemakers  
 Supplies Limited

**ONTARIO**  
 TOLL FREE: 866-562-0555  
 TEL: 905-856-9990  
 FAX: 905-856-9887  
 641 Chrislea Road, Unit #4  
 Vaughan, ON L4L 8A3

**QUEBEC**  
 TOLL FREE: 1-866-508-5082  
 TEL: (450) 430-5082  
 FAX: (450) 430-1022  
 4486 Boulevard de la Grande Allee  
 Boisbriand, QC J7H 1R9

Check out our new product lines at  
 www.productodiemakers.com  
 Email: sales@productodiemakers.com

Follow us on:

